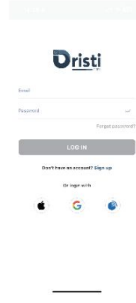


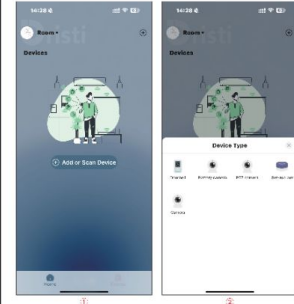
1. Download APP
 ● Please download the "Dristi" app in the App Store(iOS) or Play Store(Android).



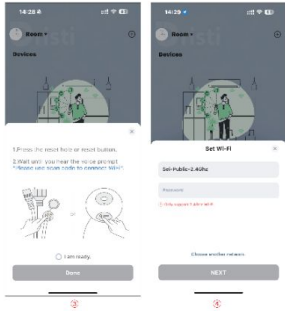
2. Create account
 ● Sign up or login using the appropriate method.



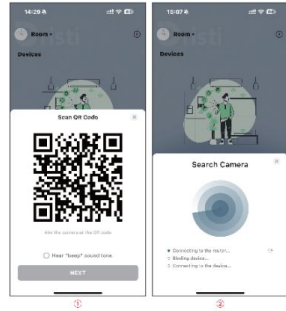
3. Add device
 ● Click the "Add or Scan Device" or the plus icon in the top right corner "Add Device"
 ● Choose the corresponding device type: Camera.



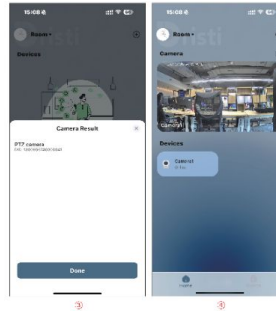
● Follow the guide in the app to power on the device, then (use a pin to) long press the reset button for 5 seconds until you hear the 'reset successful'.
 ● Enter the WiFi and password for camera to connect.



● Use the camera to scan the QR code (10-20cm). Once you hear a "beep" sound, press NEXT button to continue.
 ● The camera will start connecting to the network as well as app will start connecting to the device.



● You can see the camera DID as it added successfully.
 ● The camera will be shown on the home page.



4. Safety information



CAUTION!

NOTICE: In order to avoid any possible risk of electric shock, never attempt to open the unit. In case of the unit breaking down, repair of the unit should be carried out by qualified technicians. No part of this unit should be repaired by users.

WARNING!

- Place the device in a well-ventilated location to prevent accumulation of internal heat.
- Do not place any objects that might damage your unit near it (e.g. liquid filled objects or candles).

QC PASS



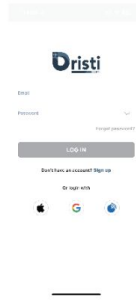
१. पप डाउनलोड गर्नुहोस् ।

● कृपया 'Dristi' एपको App Store (IOS) वा Play Store (Android) मा डाउनलोड गर्नुहोस् ।



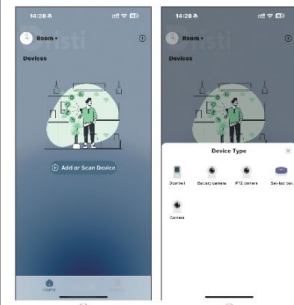
२. खाता सिर्जना गर्नुहोस् ।

● साइन अप वा साइन इन प्रक्रिया सफल पार गर्नुहोस् ।

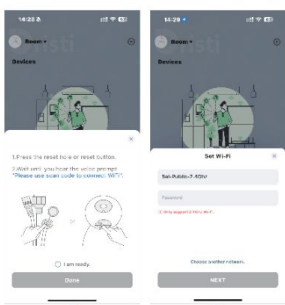


३. उपकरण थपनुहोस् ।

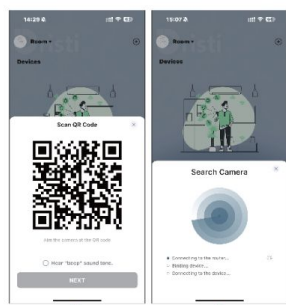
● कृपया कम्प्युटरको दुवैको हुनमा रहेको 'Add or Scan Device' वा 'Add Device' मा क्लिक गर्नुहोस् । 'Add Device' 'क्यामेरा' मा क्लिक गर्नुहोस् । 'Add Device' 'क्यामेरा' मा क्लिक गर्नुहोस् ।



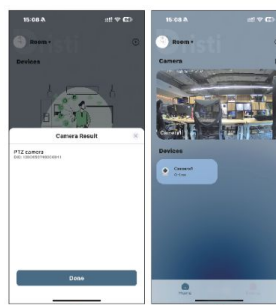
● कृपया कम्प्युटरको दुवैको हुनमा रहेको 'Add or Scan Device' वा 'Add Device' मा क्लिक गर्नुहोस् । 'Add Device' 'क्यामेरा' मा क्लिक गर्नुहोस् । 'Add Device' 'क्यामेरा' मा क्लिक गर्नुहोस् ।



● कृपया कम्प्युटरको दुवैको हुनमा रहेको 'Add or Scan Device' वा 'Add Device' मा क्लिक गर्नुहोस् । 'Add Device' 'क्यामेरा' मा क्लिक गर्नुहोस् । 'Add Device' 'क्यामेरा' मा क्लिक गर्नुहोस् ।



● कृपया कम्प्युटरको दुवैको हुनमा रहेको 'Add or Scan Device' वा 'Add Device' मा क्लिक गर्नुहोस् । 'Add Device' 'क्यामेरा' मा क्लिक गर्नुहोस् । 'Add Device' 'क्यामेरा' मा क्लिक गर्नुहोस् ।



४. सुरक्षा जानकारी

कृपया कम्प्युटरको दुवैको हुनमा रहेको 'Add or Scan Device' वा 'Add Device' मा क्लिक गर्नुहोस् । 'Add Device' 'क्यामेरा' मा क्लिक गर्नुहोस् । 'Add Device' 'क्यामेरा' मा क्लिक गर्नुहोस् ।

सावधानी:

- कृपया कम्प्युटरको दुवैको हुनमा रहेको 'Add or Scan Device' वा 'Add Device' मा क्लिक गर्नुहोस् । 'Add Device' 'क्यामेरा' मा क्लिक गर्नुहोस् । 'Add Device' 'क्यामेरा' मा क्लिक गर्नुहोस् ।

कृपया कम्प्युटरको दुवैको हुनमा रहेको 'Add or Scan Device' वा 'Add Device' मा क्लिक गर्नुहोस् । 'Add Device' 'क्यामेरा' मा क्लिक गर्नुहोस् । 'Add Device' 'क्यामेरा' मा क्लिक गर्नुहोस् ।

QC PASS